

For certain patients with advanced non-small cell lung cancer (NSCLC)

Reimagine tomorrow with **ETAPIDI**

A treatment that is designed to work with your immune system and help you live longer

In a clinical study, people who received ETAPIDI + chemotherapy and whose tumor tested positive for the biomarker PD-L1 lived longer than those who received placebo + chemotherapy

FDA-Approved Indication

ETAPIDI is a prescription medicine used to treat adults with advanced non-small cell lung cancer (NSCLC).

- ETAPIDI may be used in combination with chemotherapy containing platinum as a first-line treatment when the NSCLC:
 - has spread to other parts of the body (metastatic), and
 - does not have certain abnormal EGFR or ALK genes, and
 - your tumor tests positive for “PD-L1.”
 - It is not known if ETAPIDI is safe and effective in children.

It is not known if ETAPIDI is safe and effective in children

Important Safety Information

ETAPIDI is a medicine that may treat certain cancers by working with your immune system. ETAPIDI can cause your immune system to attack normal organs and tissues in any area of your body and can affect the way they work. These problems can sometimes become severe or life-threatening and can lead to death. You can have more than one of these problems at the same time. These problems may happen anytime during treatment or even after your treatment has ended.

etapidi
Tislelizumab



etana

Reimagining tomorrow starts today

If you have been diagnosed with NSCLC, or if you are caring for someone who has, you may feel eager to find out what the next steps are.

Now that your doctor has prescribed ETAPIDI, the goal of this guide is to empower and prepare you for treatment.

In this guide, you will find useful information about:

- What NSCLC is
- What to expect with ETAPIDI and how to prepare for treatment
- The importance of tracking how you feel
- Resources available to you



For caregivers: This guide includes recommendations on how to provide medical, practical, and emotional support for both your loved one and yourself throughout the treatment experience. Look for tips like this throughout the brochure

Important Safety Information (cont'd)

Call or see your healthcare provider right away for new or worsening symptoms, including:

Lung problems: New or worsening cough, shortness of breath, chest pain.

Intestinal problems: Diarrhea (loose stools) or more bowel movements than usual; stools that are black, tarry, sticky, or have blood or mucus; severe stomach-area (abdomen) pain or tenderness

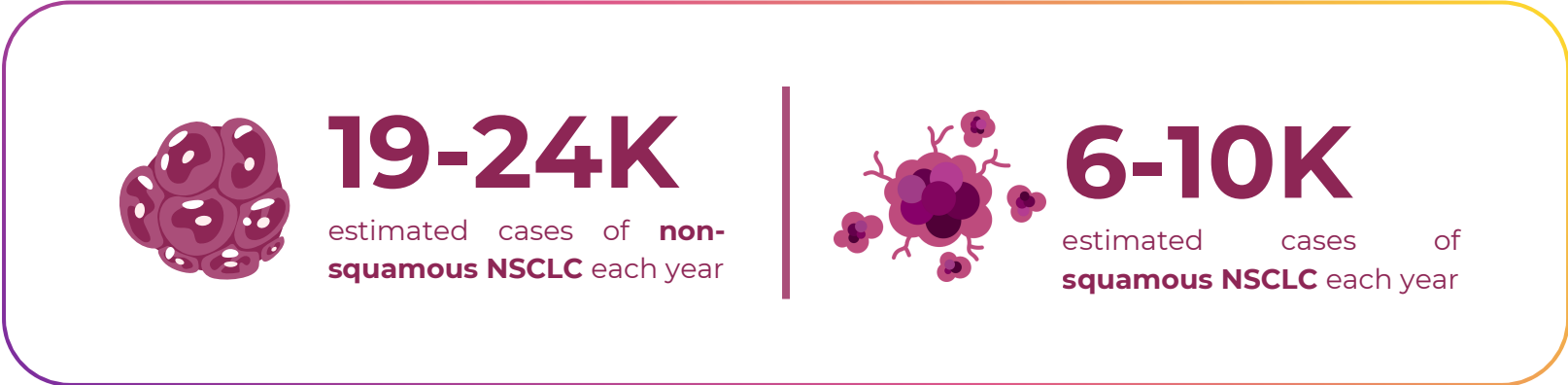


What is NSCLC?

NSCLC stands for non-small cell lung cancer. It is a type of lung cancer that begins in the tissues of the lung.

You are not alone

In Indonesia, recent studies and national cancer reports estimate that there are more than 39,000 new lung cancer cases diagnosed each year, with approximately 85% of cases classified as non-small cell lung cancer (NSCLC).



Treatments are available that can help you live longer.

Continue reading this guide to learn more about ETAPIDI, the treatment that you and your doctor decided is best for you.

Important Safety Information (cont'd)

Call or see your healthcare provider right away for new or worsening symptoms, including:

Liver problems: Yellowing of your skin or the whites of your eyes, severe nausea or vomiting, pain on the right side of your stomach area (abdomen), dark urine (tea colored), bleeding or bruising more easily than normal.



ETAPIDI is a proven and effective type of infusion treatment known as immunotherapy

etapidi
Tislelizumab

What is an infusion?

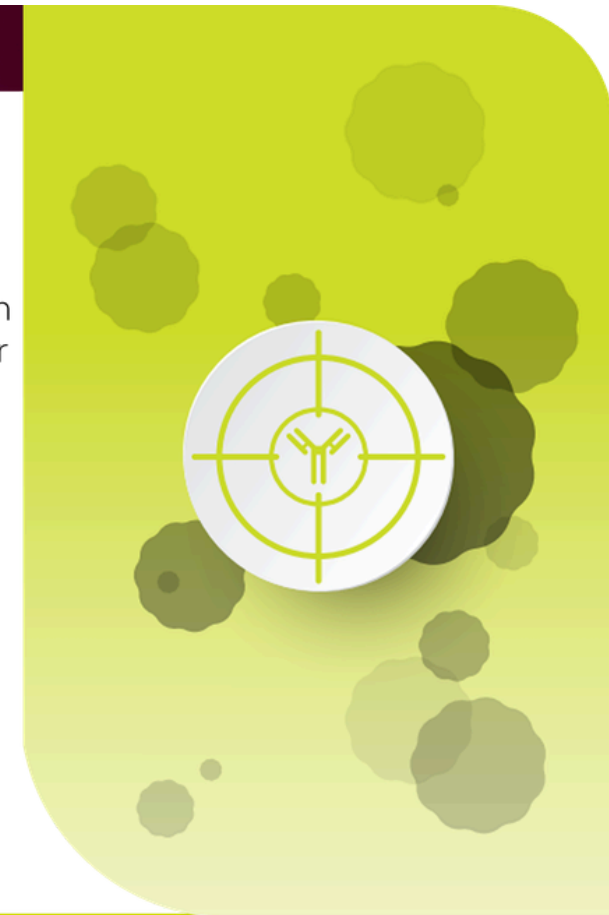
It is a very common treatment method for people with various health challenges. You may receive your ETAPIDI infusions at your doctor's office, an infusion center, or another healthcare location.



What is immunotherapy?

Immunotherapy is a type of treatment that is designed to work with your own immune system to find and destroy cancer cells. It helps boost your immune cells, such as T cells,* to attack growing cancer cells. It is a different type of treatment than chemotherapy, which can rapidly target growing cells in the body.

Often, immunotherapy and chemotherapy treatments can be partnered together to give your body the extra help it needs.



*T cells, or T lymphocytes, are a type of white blood cell.

Important Safety Information (cont'd)

Call or see your healthcare provider right away for new or worsening symptoms, including:

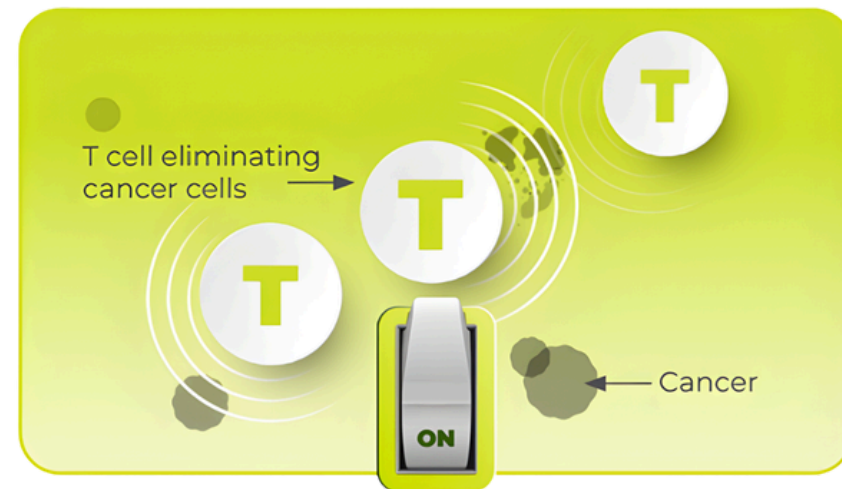
Hormone gland problems: Headaches that will not go away or unusual headaches; eye sensitivity to light; eye problems; rapid heartbeat; increased sweating; extreme tiredness; weight gain or weight loss; feeling more hungry or thirsty than usual; urinating more often than usual; hair loss; feeling cold; constipation; your voice gets deeper; dizziness or fainting; changes in mood or behavior, such as decreased sex drive, irritability, or forgetfulness.

ETAPIDI is a proven and effective type of infusion treatment known as immunotherapy

etapidi
Tislelizumab

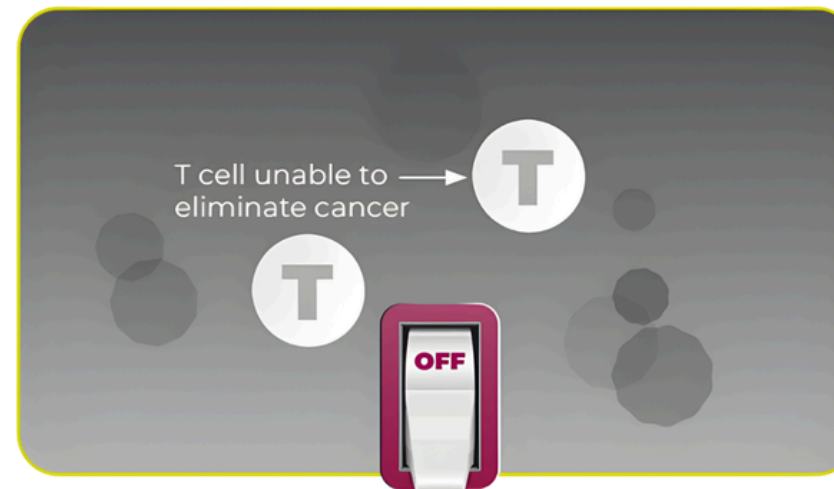
In a healthy immune system, T cells are “switched on”

The T cells are active, travelling through your body, looking for and eliminating disease and infection



In a healthy immune system, T cells are “switched on”

The T cells are active, travelling through your body, looking for and eliminating disease and infection



In a healthy immune system, T cells are “switched on”

The T cells are active, travelling through your body, looking for and eliminating disease and infection



ETAPIDI has been shown to work in people who have tested positive for the PD-L1 biomarker. Levels of PD-L1 vary from person to person. If you are receiving ETAPIDI, your doctor likely has found that certain cells in your tumor show PD-L1.

Important Safety Information (cont'd)

Call or see your healthcare provider right away for new or worsening symptoms, including:

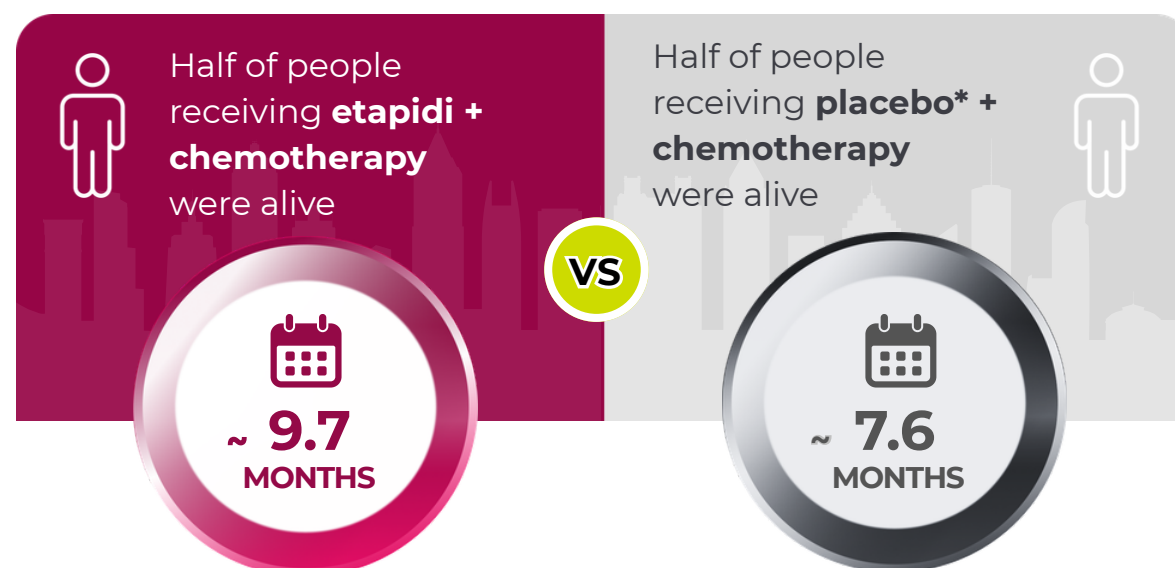
Kidney problems: Decrease in your amount of urine, blood in your urine, swelling in your ankles, loss of appetite

ETAPIDI can help people with GC/GEJC respond to treatment and live longer

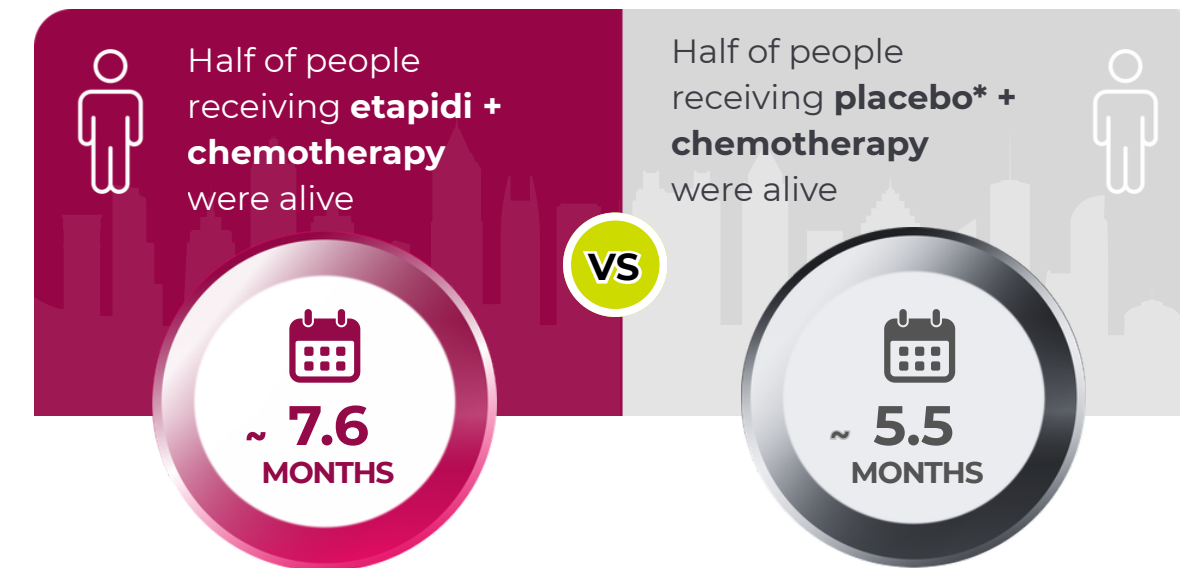
etapidi
Tislelizumab

The data below show the median progression-free survival, demonstrating that patients treated with Etapidi plus chemotherapy lived longer compared with chemotherapy alone.

Nonsquamous Non-small lung cancer (NSCLC)



Squamous Non-small lung cancer (NSCLC)



Important Safety Information (cont'd)

Call or see your healthcare provider right away for new or worsening symptoms, including:

Problems can also happen in other organs and tissues. These are not all of the signs and symptoms of immune system problems that can happen with ETAPIDI. Call or see your healthcare provider right away for new or worsening symptoms, which may include: chest pain, irregular heartbeat, shortness of breath, swelling of ankles; confusion, sleepiness, memory problems, changes in mood or behavior, stiff neck, balance problems, tingling or numbness of the arms or legs; double vision, blurry vision, sensitivity to light, eye pain, changes in eyesight; persistent or severe muscle pain or weakness, muscle cramps; low red blood cells, bruising.

Cancer community resources available to you

etapidi
Tislelizumab



A support community for cancer patients and survivors in Indonesia. Its main focus is to provide companionship, education, and to foster hope and resilience through social and community activities.

[Visit Hope Community Indonesia](#)



A professional organization for ENT-HNS specialists in Indonesia, founded on October 29, 1966

[Visit PERHATI-KL](#)



A national non-profit organization dedicated to cancer prevention, early detection, public education, and support for cancer patients and their families across Indonesia.

[Visit Yayasan Kanker Indonesia](#)



a medical professional organization that focuses on improving the treatment, research, and education related to lung cancer and tumors in the chest/thorax cavity

[Visit POI](#)



A community that provides accurate cancer information as well as emotional and practical support for patients, survivors, and caregivers to help them navigate treatment more effectively.

[Visit CISC](#)



A professional organization consisting of specialist doctors (surgery, medical, radiotherapy, pathology) that focuses on the diagnosis and management of cancer patients.

[Visit POTI](#)

Important Safety Information (cont'd)

Call or see your healthcare provider right away for new or worsening symptoms, including:

Skin problems: Rash; itching; skin blistering or peeling; painful sores or ulcers in your mouth or in your nose, throat, or genital area; fever or flu-like symptoms; swollen lymph nodes

Cancer community resources available to you

etapidi
Tislelizumab



The Indonesian Society of Hematology Medical Oncology is a professional organization dedicated to advancing the field of hematology and medical oncology in the Semarang region.

[Visit ISHMO](#)



Indonesian Society of Hematology and Blood Transfusion is a professional medical association in Indonesia dedicated to the field of blood diseases (hematology) and blood transfusion services.

[Visit PHTDI](#)



PERABOI is a professional organization of surgical specialists dedicated to cancer management in Indonesia, established on July 14, 1984.

[Visit PERABOI](#)

Important Safety Information (cont'd)

Call or see your healthcare provider right away for new or worsening symptoms, including:

- **Intestinal problems:** Diarrhea (loose stools) or more bowel movements than usual, stools that are black, tarry, sticky, or have blood or mucus, severe stomach area (abdomen) pain or tenderness

Beyond your treatment with TEVIMBRA, there are additional ways to support your health and comfort

etapidi
Tislelizumab

Some cancers and their treatments may affect the ability to eat and swallow. This can make eating challenging and may lead to reduced appetite or unintended weight loss. Therefore, it is important to have access to foods that are soft, moist, and easy to swallow, such as:



Oatmeal



Pureed soups



Mashed potatoes



Scrambled eggs



Yogurt and pudding



Soft rice and pasta



Smoothies



FOR CAREGIVERS:

To ensure that your loved one is consuming the nutrients they need, try preparing snacks and meals like the ones above.



etana

id.etanabiotech.com

etapidi
Tislelizumab